

PAB Bankshares, Inc.

NASDAQ:PABK

Sandler O'Neill & Partners, L.P. East Coast Financial Services Conference

Panel Presentation By

M. Burke Welsh, Jr.
President and Chief Executive Officer

November 13, 2007
Naples, Florida

www.pabbankshares.com

PAB
BANKSHARES
INC

Forward-Looking Statement Notice

NASDAQ:PABK

This presentation contains “**forward-looking statements**”, as defined by federal securities laws. Statements regarding the future of the Company, including our outlook on earnings, dividends, stock performance, asset quality, real estate markets, asset or deposit growth, branching, interest rates and general market conditions are forward-looking statements. These forward-looking statements are based on our beliefs and assumptions using data currently available to us and involve numerous risks and uncertainties. Accordingly, a variety of factors could cause our actual results to differ materially from the opinions expressed in these forward-looking statements. A potential list of such factors is outlined in our periodic reports filed with the Securities and Exchange Commission (the “SEC”), including our Annual Report on Form 10-K for the year ended December 31, 2006 as filed with the SEC on March 16, 2007. A copy of our Form 10-K may be found in the “Investor Relations” section of our website, www.pabbankshares.com.

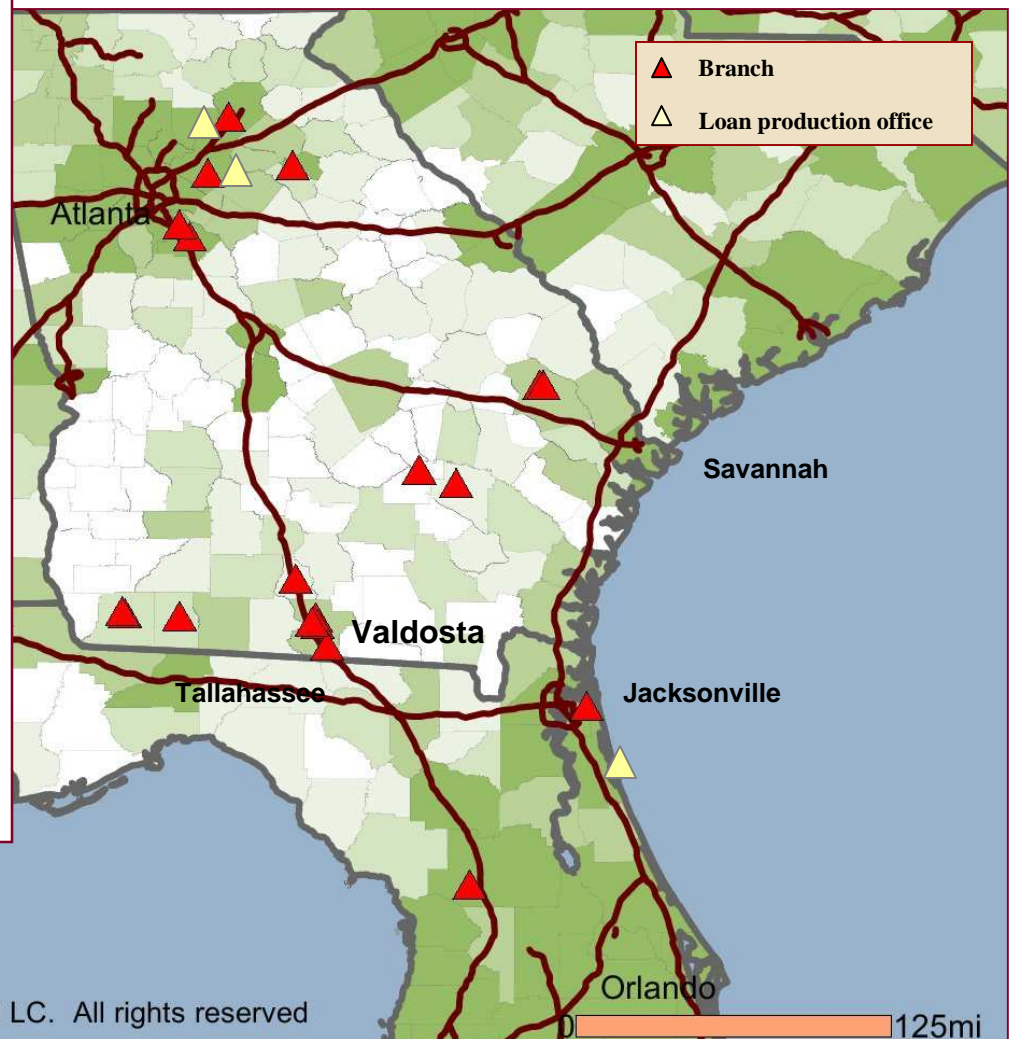
PAB
BANKSHARES
INC

www.pabbankshares.com

Company Overview

NASDAQ:PABK

- \$1.2 billion in total assets
 - 5-year CAGR = 10.6% *
- \$142 million market cap ^
- Senior Management Team with an average banking tenure of over 28 years each
- Strong market position in South Georgia
- Growing presence in attractive demographic markets around Atlanta and North Florida



Copyright (C) 2007 SNL Financial LC. All rights reserved

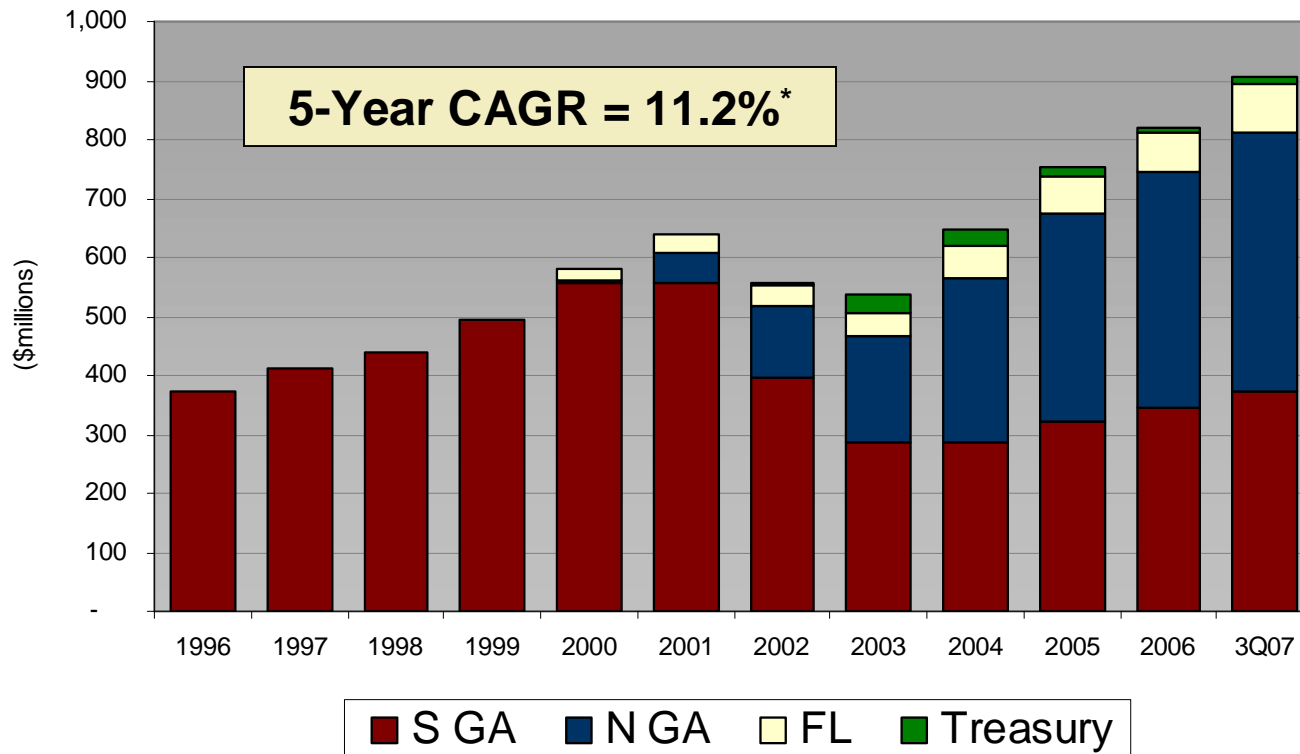
PAB
BANKSHARES
INC

* From 12-31-02 to 9-30-07 (annualized)

^ Based on Nov. 5, 2007 closing stock price

Loan Portfolio Analysis

NASDAQ:PABK

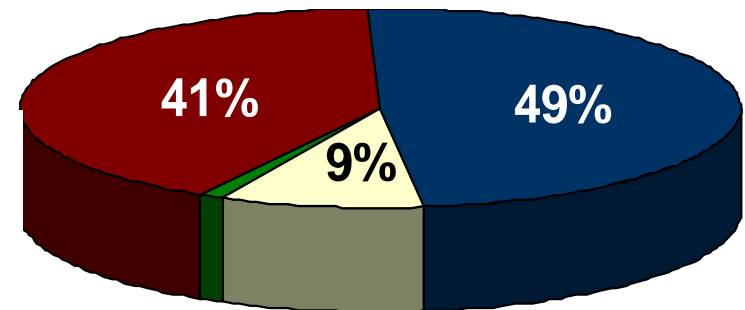


**8.43%
Average
Loan Yield**

(for the Quarter
Ended Sept. 30,
2007)

* From 12-31-02 to 9-30-07 (annualized)

Loans By Market
(as of Sept. 30, 2007)



PAB
BANKSHARES
INC

www.pabbankshares.com

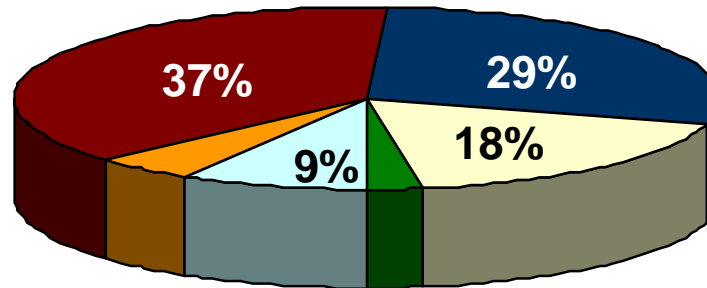
Loan Portfolio Concentrations

NASDAQ:PABK

- Commercial
- Ag/farm
- Construction & Development
- Commercial R/E
- Residential R/E
- Consumer

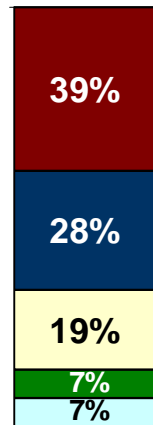
Loans By Type

(as of Sept. 30, 2007)



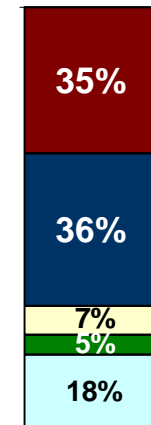
Construction & Development Loans

- Residential A&D
- Commercial A&D
- Residential Construction
- Commercial Construction
- Other



Commercial Real Estate Loans

- Owner-occupied
- Nonowner-occupied
- Multi-family
- Hotel/Motel
- Other



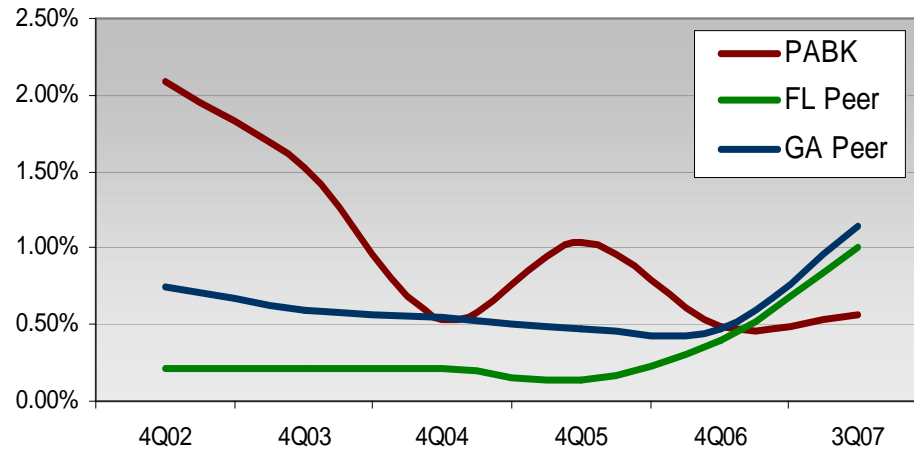
PAB
BANKSHARES
INC

www.pabbankshares.com

Asset Quality

NASDAQ:PABK

Nonperforming Loans/Total Loans



2007 YTD Net Loss Ratio

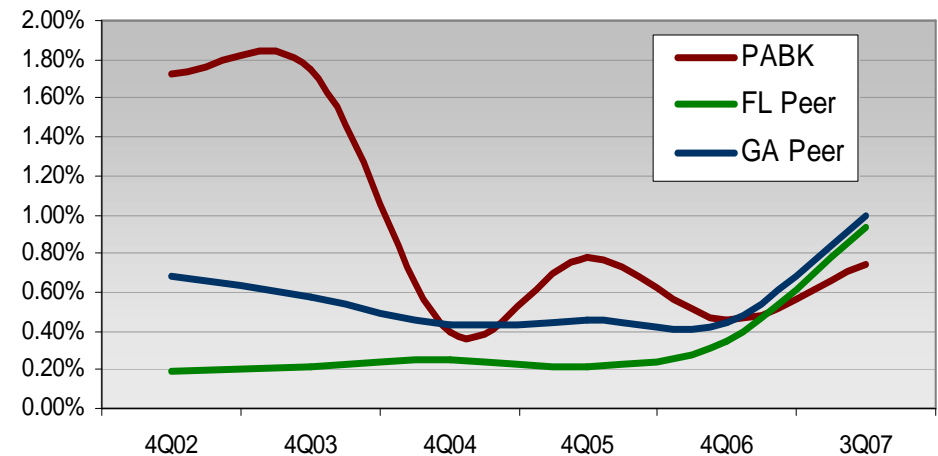
0.02%

5-Year Avg. Net Loss Ratio

0.09%

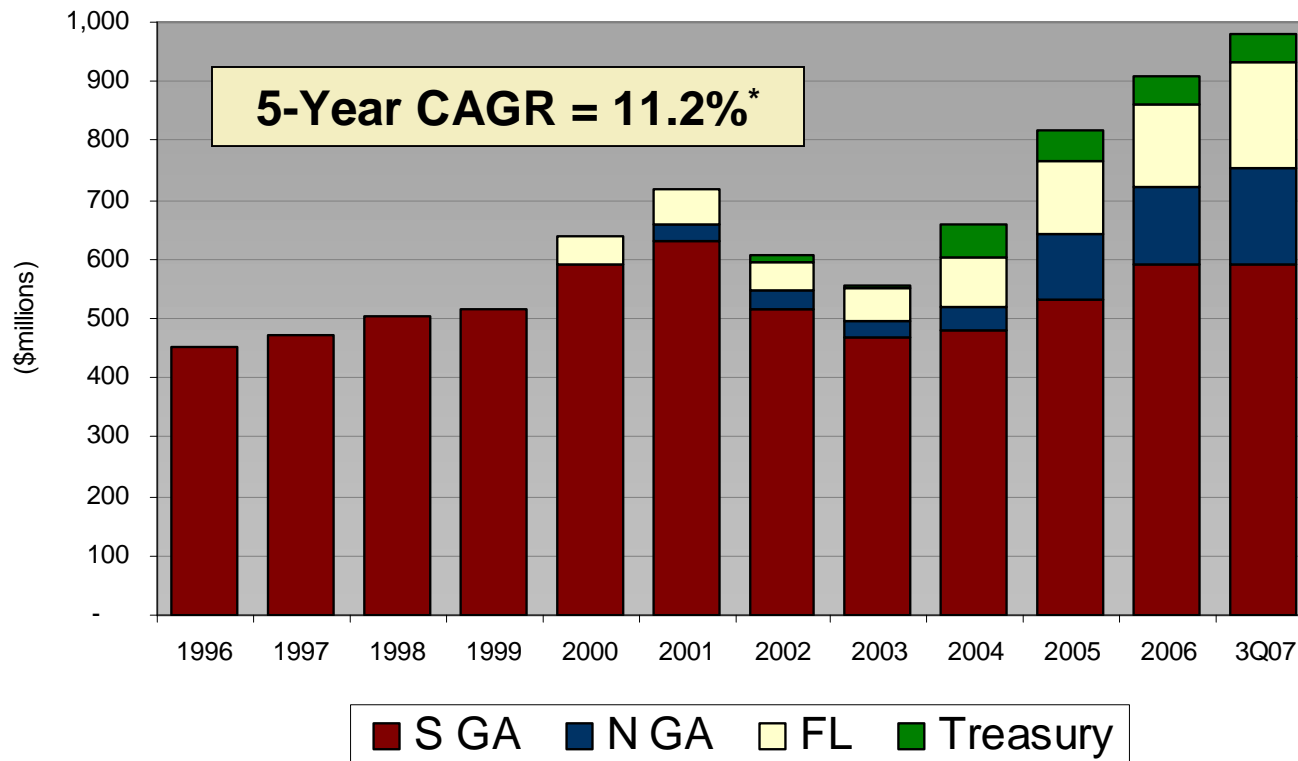
GA Peer = GA Public Banks \$500mm - \$3b in Assets
FL Peer = FL Public Banks \$500mm - \$3b in Assets
 Source: SNL Financial

Nonperforming Assets/Total Assets



Deposit Portfolio Analysis

NASDAQ:PABK



3.99%
Average
Rate Paid
for Deposits

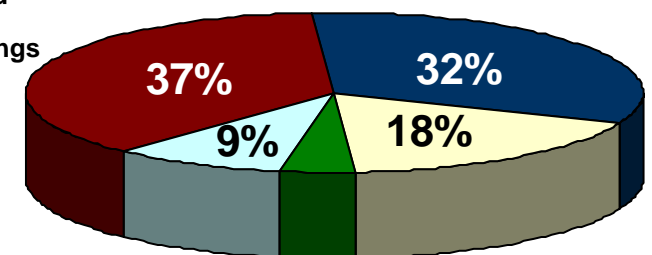
(for the Quarter Ended
Sept. 30, 2007)

* From 12-31-02 to 9-30-07 (annualized)

Deposits By Type

(as of Sept. 30, 2007)

- Noninterest-bearing Demand
- Int.-bearing Demand & Savings
- Time < \$100m
- Time > \$100m
- Brokered Time



PAB
BANKSHARES
INC

www.pabbankshares.com